



DIRTZtheatre

Technical Rider
ShortStories

4 pages | Updated mai 2021

This data sheet forms an integral part of the contract.

Please send it to anyone concerned by this show
It must be returned, initialed at each footer and signed.

CONTACTS

Stage and Light Manager

Mathieu Riffard

+33 (0)6 83 17 55 39 | ptimat2@hotmail.fr

Brendan Royer (en alternance) +33 6 29 16 16 67 brendan.royer@outlook.fr

Production manager

Aurélie Picard

+33 6 18 95 70 11 | diffusiondirtztheatre@gmail.com

Artistic

Jolanda Löllmann et Charlie Denat

+33 (0)6 60 68 89 57 | dirtztheatre@gmail.com

Administration

Quentin Vitart

+33 (0) 6 66 51 10 64 | productiondirtztheatre@gmail.com

This do presents the ideal technical conditions of the show as it was presented at its creation.
An adaptation can be considered. In this case, please contact us. ptimat2@hotmail.fr

General Information

The organiser undertakes to provide upon arrival of the company the place of performance in working order with an electrical installation adapted to the power required by all the equipment used for the show, in accordance with safety standards, as well as the personnel necessary for assembly and disassembly at the service of the performance.

The opening of the doors, the extinguishing of all lights other than those planned for the show and the lighting of the room will be done in agreement with the stage manager of the company.

Team

- 2 dancers
- 1 Technician
- 1 production manager

Schedule

After the arrival of the company, 8 hours are required for the setting up, markings, light adjustments , technical run and a general rehearsal.

Before the start of the show, the performers need to warm up, for this, a time of 1 h is required. Ideally this warm-up is done on the set, before the audience enters. If access to the stage is not possible at this time, please provide a spacious and heated place to allow the artists to warm up.

The organiser will ensure that the schedules defined in advance with the production or the stage manager are respected. Any modification must be the subject of a prior agreement of these.

Dressing room

Please provide a dressing room for the entire team, heated, equipped with mirrors, electrical outlets.

If the place is equipped with showers, please provide towels.

This space must be reserved for members of the company and must be able to be locked.

Sound system

The sound system must be of professional quality, homogeneous and adapted to the place, with subs and will be under the responsibility of a competent technician.

Sound Console

Need a PROFESSIONAL console where we will come to wire 2 stereo sources. Please provide a space for 1 computer, as well as a power outlet.

Returns

We need 2 returns on feet, 1 left , 1 right , hidden in a streets of the side curtains.

Stage

A stage of minimum 7m opening and 7m depth, fully covered by black dance floor.

A black stage background and at least 3 streets of side curtains (right/left) .

If the dimensions cannot be respected, **please inform the production.**

A fog machine (Unique Look type), with DMX control.

Please ensure a complete blackout as possible, the beginning of the show should take place in complete darkness.

Lightening console

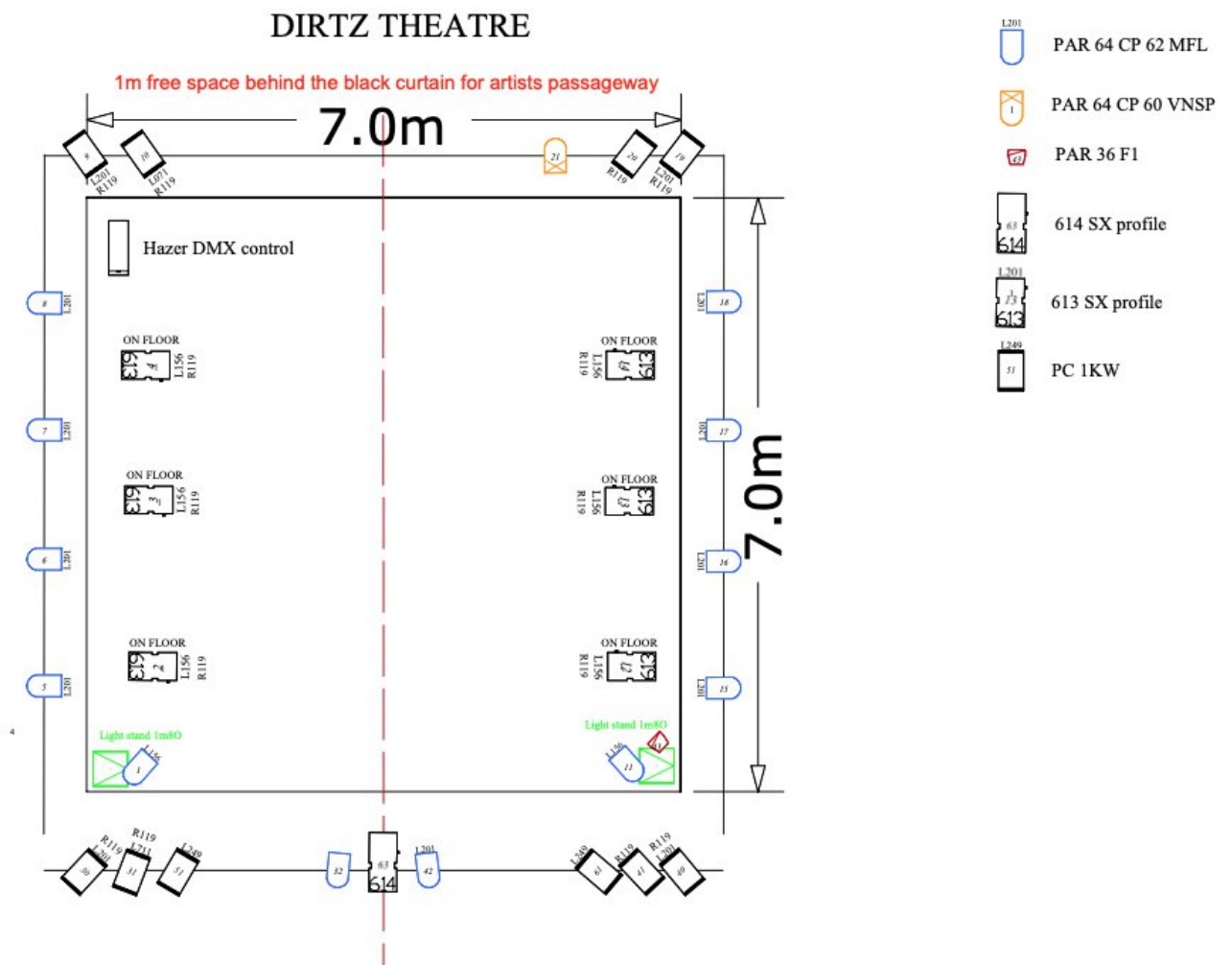
We move with our lighting control system (GMA on PC), please provide a location for 1 computer and a DMX node, as well as 3 power outlets to connect our equipment.

The lighting control and the sound control must be side by side.

Lights

- 12 x PAR 64 CP 62
- 1 x PAR 64 CP 60
- 1 x PAR 36 F1
- 1 x 614 SX
- 6 x 613 SX
- 10 x PC 1 KW

Lightplan



DÍRTZtheatre

ShortStories


LEGENDE

L201
 PAR 64 CP 62 x 12

 PAR 64 CP 60 x 1

 PAR 36 F1 x 1

 614 SX x 1

L201
 613 SX x 6

L249
 PC 1KW x 10